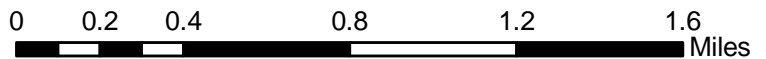
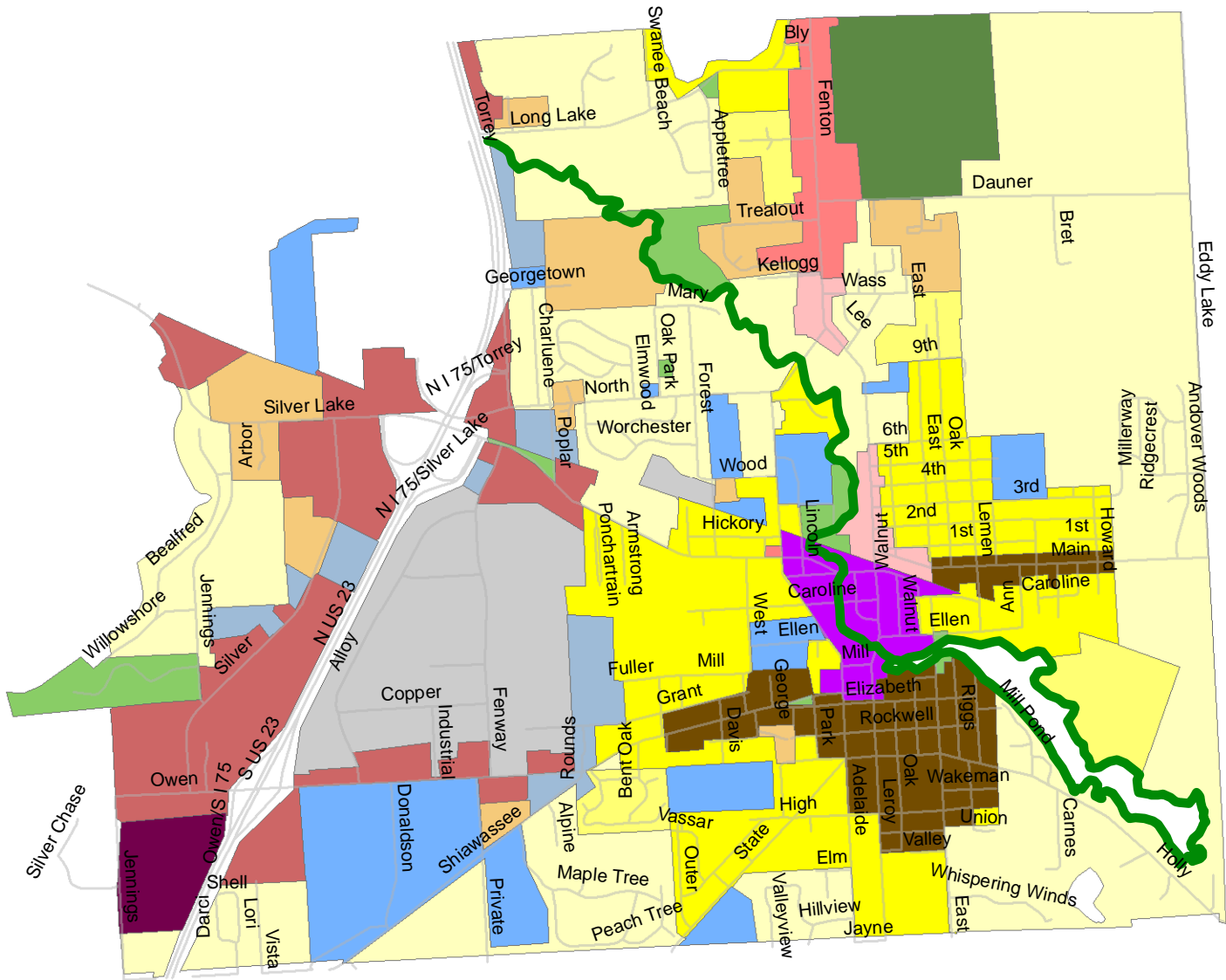
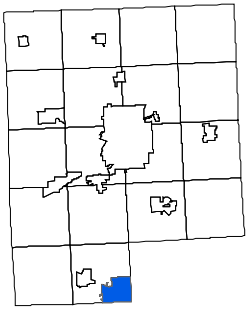


City of Fenton Future Land Use



Genesee County



Legend

- | | |
|---------------------------------------|----------------------------|
| — Roads | North Village |
| Low Density Single Family Detached | Office |
| Single Family Attached | Industrial |
| Medium Density Single Family Detached | Quasi Public/Institutional |
| Manufactured Home Community | Nature Preserve |
| Urban Residential | Parkland |
| Multiple Family | Shoreline Conservation |
| Neighborhood Business | |
| Community Business | |
| Downtown | |

